



EasyCare2go.com

24/7 Doctors Nationwide



Saves Money on Out of Pocket
Medical and Prescription Drug Costs

LOGIN

Activate your account

Healthcare Affiliate Program

A Healthcare Program which can help you save a lot of money!

This is a National Healthcare Affiliate Program serving 3.5 million subscribers. It is an innovative website and mobile app that helps you easily navigate and maximize Healthcare Services. Identify qualified physicians, access Labs, and talk to a Behavioral/Mental Health Counselor with ease. **No Co-Pays, No Deductibles, No Pre-Existing Exclusions, No Insurance needed.**



TELEMEDICINE



PHARMACY



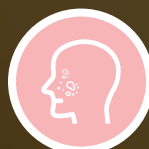
CLINIC VISIT



BEHAVIORAL &
MENTAL HEALTH



LAB SERVICE



TELE
DERMATOLOGY



WELLNESS
COACHING



HEALTHCARE
LIAISON

www.enroll.easycare2go.com



Eight areas of Healthcare Benefits

Important: This is not insurance



Telemedicine

Consultation with board certified physician's minimum 15 years of service.



Pharmacy Saving

Over 195 medications for zero cost, 60,000 pharmacies when prescribed by easycare2go doctor. Shop and compare prescription prices, home delivery for 90-day supplies, international pharmacy access when available and (PAP) prescription assistance when available.



Clinic Visit

Benefits from over 7,000 urgent care clinics including CVS minute clinics.



Behavioral/Mental Health Counseling

12 Fifty minute (50) unlimited use sessions per immediate family member with session fee range from \$25 - \$50 depending on use.





Lab services

With 5,000 labs including Lab-Corp and Quest. 30% -60 % less than street prices.



Tele-Dermatology

Safely upload photos results within 72hrs.



Wellness coaching

Stop Smoking, diet, Exercise and Lifestyle change!



Healthcare Liaison

Benefit assistance in English & Spanish on demand 160 Languages upon request to help you maximize the use of your benefits.

Most common treated conditions

- Allergies
- Arthritic Pain
- Laryngitis
- Skin Infections
- Pharyngitis
- Gastrointestinal Concerns
- Virus Infections
- Pink Eye Infection
- Ear Infection
- Minor Burns
- Respiratory Infections
- Insect Bites
- Pain and Strain
- Urinary Tract Infection (UTI)
- Sinus Headaches
- Internal/Domestic Travel Constipation
- And much more!



Additional Member Benefits

These require a separate registration to activate your benefits.

Important: This is not insurance



Discount Dental Benefit

Save 20% to 50% on most dental procedures including routine oral exams, unlimited cleanings, and major work such as dentures, root canals and crowns through one of the largest dental networks nationally with a focus on neighborhood dentists.

Dental Care is provided on the Careington Network



Discount Vision Benefit

Connect with top-tier eye specialists and save 5% to 30% off the retail price of eye for exams, eyeglasses, and contact lenses at more than 40,000 participating Superior Vision provider locations across the country.

Vision Care wonders is provided by Careington on The Superior Vision Network



Discount Hear Benefit

Easycare2go members can receive auditory care from experts at over 7,000 EPIC Hearing providers nationwide with hearing aids starting as low as \$699.00.

Hearing services are provided by Careington on the EPIC Hearing Network



Dial Care Virtual Vet Benefit

Members can reduce unnecessary trips to the vet when taking care of their furry or feathery family members. Dial Care Virtual Vet grants immediate access to licensed veterinary professionals via video chat or phone calls for advice and guidance 24 hours a day every day of the year

Virtual Vet is provided by Careington on the DialCare Virtual Vet Network





Virtual Healthcare Made Easy!

Easycare2go Advantage Vs Everyone Else

Important: This is not insurance

Flexible payment options

Save 10% Now – when you choose the Annual or Quarterly Option

12 months of virtual Vet Care are free with any annual membership of EasyCare2go™

Annual
\$362.00

Quarterly
\$91.65

Monthly
\$33.95

8

Health Benefits



Telemedicine



Pharmacy



Wellness Coaching



Behavioral
Health



Labs



Healthcare Liaison



Clinic Visist



Dermatology



Most Rx Drugs and Prices

CONDITION	DRUG NAME	BRAND NAME	ANNUAL RXS	RETAIL	PREPAY	HOME DELIVERY	RX ASSISTANCE	RX CARD
Cholesterol	Atorvastatin	Lipitor	115 million	\$1	\$1			
Thyroid	Levothyroxine	Synthroid	100 million	\$14.73	\$9.06	\$12.95	\$12.95	
Diabetes	Metformin	Glucophage	93 million	\$1	\$1			
High Blood Pressure	Lisinopril	Zestril	89 million	\$1	\$1			
High Blood Pressure	Amlodipine	Norvasc	70 million	\$1	\$1			
High Blood Pressure	Metoprolol	Toporol	67 million	\$21.09	\$7.21	\$13.61	\$13.61	
Asthma	Albuterol	Ventolin	62 million	\$82.17	\$1			
Acid Reduction	Omeprazole	Prilosec	56 million	\$1	\$1			
High Blood Pressure	Losartan	Cozaar	55 million	\$34.81	\$6.28	\$12.95	\$12.95	
Epilepsi	Gabapentin	Neurotin	50 million	\$1	\$1			
High Blood Pressure	Hydrochlorothiazide	Hydrodiuril	42 million	\$1	\$1			
Anti-depressant	Sertraline	Zoloft	38 million	\$1	\$1			
High-Cholesterol	Simvastatin	Zocor	37 million	\$1	\$1			
Asthma	Montelukast	Singulair	32 million	\$1	\$1			
Anti-depressant	Escitalopram	Lexapro	31 million	\$1	\$1			
Pain	Hydrocodone/ acetaminophen	Vicodin	30 million					
High-Cholesterol	Rosuvastatin	Crestor	30 million	\$117.72	\$7.21	\$12.95	\$12.95	\$8.90
Depression	Bupropion	Wellbutrin	29 million	\$1	\$1			
High Blood Pressure	Furusemide	Laxis	27 million	\$1	\$1			
Acid Reduction	Pantoprazole	Protonix	27 million	\$1	\$1			
Depression	Trazodone	Deseryl	26 million	\$1	\$1			
ADHD	Dextroamphetamine	Adderal	26 million	\$28.69	\$14.63			
Asthma	Fluticasone	Flonase	25 million	\$37.89	\$9.35	\$15.11	\$15.11	
Prostate	Tamsulosin	Flomax	25 million	\$58.30	\$6.25	\$12.95	\$12.95	
Anti-depressant	Fluoxetine	Prozac	23 million	\$1.00	\$1.00			
Heart	Carvedilol	Coreg	23 million	\$1	\$1			
Anti-depressant	Duloxetine	Cymbalta	23 million	\$1	\$1			

CONDITION	DRUG NAME	BRAND NAME	ANNUAL RXS	RETAIL	PREPAY	HOME DELIVERY	RX ASSISTANCE	RX CARD
Pain	Meloxicam	Mobic	20 million	\$1	\$1			
Blood Thinner	Clopidogrel	Plavix	19 million	\$1	\$1			
Steroid	prednisone		19 million	\$1	\$1			
Anti-depressant	Citalopram	Celexa	18 million	\$1	\$1			
Diabetes	Insulin glargine	Lantus	18 million			\$157.03	\$157.03	
Diabetes	Accu-chek Strips			\$124.12	\$30.90			
Diabetes	Easy Touch				\$71.02			
Diabetes	Freestyle Libre 14			\$1,676.29	\$71.23	\$89.29		\$66.85
Diabetes	Dexcom G7			\$946.41	\$342	\$383.06		\$304.20
Potassium	Potassium chloride	K-dur	18 million	\$90.54	\$36.03			
High-Cholesterol	Pravastatin	Pravachol	18 million	\$63.30	\$7.59	\$13.26	\$13.26	
Pain	Tramadol	Ultram	17 million	\$1	\$1			
Anxiety	Alprazolam	Xanax	17 million	\$1	\$1			
Pain	Cyclobenzaprine	Flexiril	16 million	\$1	\$1			
ED	Tadalafil	Cialis		\$555.05	\$1			

Top Medicare Drugs

ANNUAL SPEND	CONDITION	DRUG NAME	RETAIL	PREPAY	HOME DELIVERY	PRESCRIPTION ASSISTANCE	INTERNATIONAL	RX CARD
10 Billion	Atrial Fib	Eliquis	\$312.61	\$306.17	\$322.97	\$80	\$157.94	
5.4 Billion	Cancer	Revlimid	NA	NA	NA	\$400	NA	
4.7 Billion	Blood Thinner	Xarelto	\$606.26	\$593.66	\$591.55	\$80	\$269.99	
3.9 Billion	Diabetes	Januvia	\$585.25	\$588.18	\$588.18	\$110	\$393.89	
3.3 Billion	Diabetes	Trulicity	\$1,009.83	\$991.87	\$969.54	NA	\$530.60	\$898.89
3 Billion	Cancer	Imbruvica	NA	NA	NA	NA	\$200	NA
2.4 Billion	Diabetes	Jardiance	\$663.42	\$644.43	\$634	\$80	\$148.49	\$574.44
2.2 Billion	Arthritis	Humira	NA	NA	\$7,031.99	NA	NA	
2.1 Billion	Cancer	Ibrance	NA	NA	NA	\$200	\$6,749.99	
2 Billion	Asthma	Symbicort	NA	NA	\$438.43	\$60	\$246.93	

Sample Dental Savings

PROCEDURE DESCRIPTION	REGULAR COST*	PLAN COST**	SAVINGS AMOUNT	SAVINGS PERCENT
Adult Cleaning	\$132	\$60	\$72	55%
Child Cleaning	\$94	\$45	\$49	52%
Routine Checkup	\$78	\$30	\$48	62%
Extensive Oral Exam	\$136	\$50	\$86	63%
Four Bitewing X-Rays	\$89	\$40	\$49	55%
Composite (White) Filling	\$210	\$98	\$112	53%
Crown (porcelain fused to noble metal)	\$1,498	\$781	\$717	48%
Complete Upper Denture	\$2,152	\$1,021	\$1,131	53%
Molar Root Canal	\$1,459	\$726	\$733	50%
Extraction (single tooth)	\$255	\$101	\$154	60%

****Dental Care is provided on the Careington Network**

*Regular cost is based on the average 80th percentile usual and customary rates as detailed in the 2018 FAIR Health Report in the Los Angeles, Orlando, Chicago & NYC metropolitan areas.

**These fees represent the average of the assigned DNI5 fees in the Los Angeles, Orlando, Chicago & NYC metropolitan areas. Prices subject to change.

Disclosures: THIS PLAN IS NOT INSURANCE and is not intended to replace health insurance. This plan does not meet the minimum creditable coverage requirements under M.G.L. c.111M and 956 CMR 5.00. This plan is not a Qualified Health Plan under the Affordable Care Act. The range of discounts will vary depending on the type of provider and service. The plan does not pay providers directly. Plan members must pay for all services but will receive a discount from participating providers. The list of participating providers is at www.careington.com/members. A written list of participating providers is available upon request. You may cancel within the first 30 days after effective date or receipt of membership materials (whichever is later) and receive a full refund, less a nominal processing fee (nominal fee for MD residents is \$5, AR and TN residents will be refunded processing fee). Discount Plan Organization and administrator: Careington International Corporation, 7400 Gaylord Parkway, Frisco, TX 75034; phone 800-441-0380. This plan is not available in Vermont or Washington.



Superior Vision members can **save 5% to 30% off** the retail price of eye exams, eye glasses, and contact lenses from participating providers.

Service	Regular Cost*	Plan Cost**	Typical Members Savings
Vision Exam	\$155	\$75	\$80
Frames	\$130	\$91	\$39
Single Vision Lenses	\$80	\$40	\$40
Photochromics	\$100	\$70	\$30
Anti-Reglective Coating	\$102	\$45	\$57
Total	\$567	\$321	\$246

**Vision Care wonders is provided by Careington on The Superior Vision Network

*Represents national average retail costs comparing to Member Fee Schedule. The actual savings may vary based on amount purchased.

*This plan is unavailable in MT, VT & WA. and location.

*This plan is not insurance.



For more information and enrollment, please go to www.enroll.easycare2go.com



Important: This is not insurance